



Castano Group has a **unique matrix of skills** in art and science that is required to project imagery onto 3D objects, a technique commonly known as projection mapping. The result is a **visually striking** effect. Three factors have to work in unison for a projection mapping project to work, and Castano Group has capabilities in all of them:

CREATION

- Script Writing
- Concept Development
- Storyboarding
- Data Visualization
- Graphic Design
- Illustration
- Character Design

TECHNICAL

- Projection Mapping
- CMS Development
- Media Server Development
- DMX & LED Visual Systems
- Media Architecture
- Augmented Reality
- Surface 3D scanning

PRODUCTION

- Video Production
- Motion Graphics
- 2D & 3D Animation
- Filming & Editing
- Sound Design
- Special Effects

PROJECTION



ARCHITECTURE



OBJECTS



INTERIOR



FULLDOME



LANDSCAPE



WATER

EDUCATIONAL | ENTERTAINMENT | DECORATIVE | ADVERTISING/MARKETING

DIFFERENTIATORS



IMMERSION

Blending creativity, technology, and the senses leads to transformative interactions with your audience.



TECHNOLOGY INTEGRATION

Seamless technology integration into existing spaces allows people to interact and explore freely.



SPATIAL INTEGRATION

An experienced team that can seamlessly integrate digital elements within complex structural environments to create immersive experiences.



SUPERIOR CREATIVE

Work that has been recognized with multiple Emmy, Telly, and ADDY Awards.

COMPANY DATA

UEI: EZTCGMJSL9C5
DUNS: 81009077
CAGE: 834A7

NAICS Codes: 512110, 12191, 541430, 541490, 541810, 541850, 541922, 711510, 712110

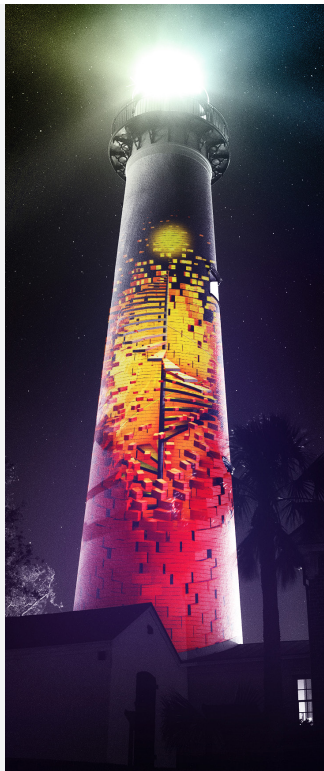
CONTACT

Joash Brunet
 (905)-607-5522
Joash@castanogroup.com



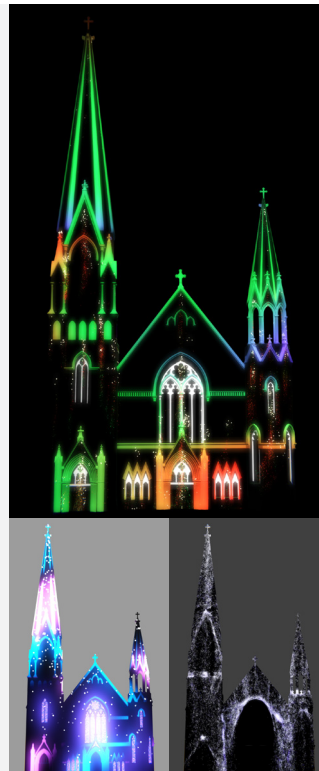
Baptist Health and Wolfson Children's Hospital - Reflections of Hope

Castano Group is at the forefront of using projection mapping to transform public spaces by embedding digital media into built environments. We worked closely with a design-build team to create a five-story projection on the facade of the entrance building to the Baptist Medical Center Jacksonville and Wolfson Children's Hospital campus. The content suite we created for the building features 3D animation integrated with live-action videos. The rotating suite of nightly projections has changed the urban environment around the hospital. It's an immersive, psychologically-attuned piece of media architecture that can lift the spirits of children and families dealing with difficult circumstances.



Coastal Georgia Historical Society - Legacy of Light

Projection mapping is a powerful educational, cultural, and heritage interpretation tool. Castano Group created a projection mapping experience for the 150th anniversary of the St. Simons Island Lighthouse Museum in Georgia that entertained and enlightened audiences.



Cathedral District Jax - Light at the Basilica

Castano Group uses projection mapping to recontextualize our relationships with everything from small objects to classical forms of architecture. Our holiday projection show at one of Jacksonville, Florida's oldest churches connected music, art, animation, and architecture in a way that helped generate a newfound appreciation for a historic structure.